

QUICK START GUIDE

CLUB700BT



WHAT'S IN THE BOX



APP



JBL HEADPHONES

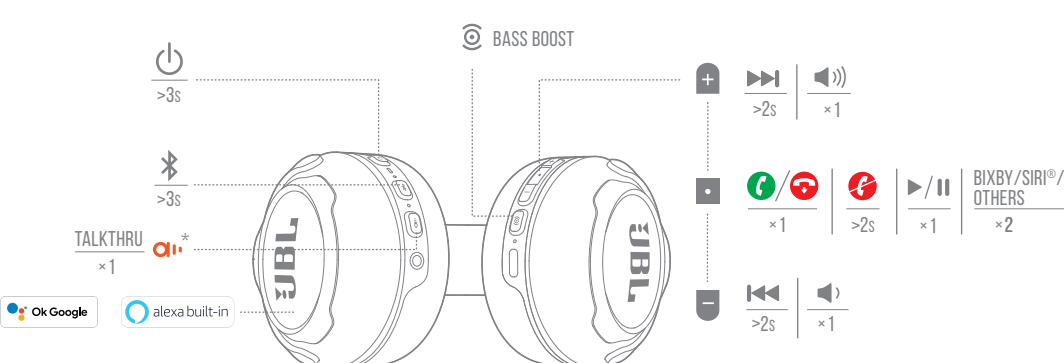
GET EVEN MORE CONTROL AND PERSONALIZATION OF YOUR LISTENING EXPERIENCE WITH THIS FREE APP.



POWER ON & CONNECT



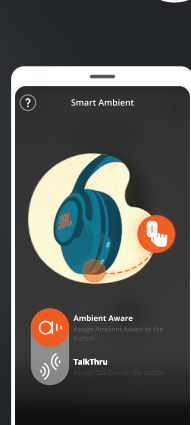
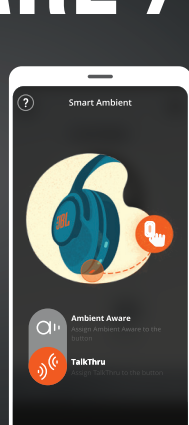
BUTTON COMMAND



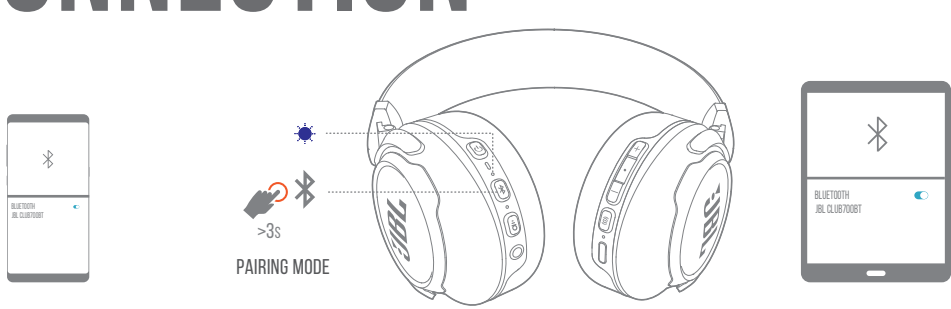
* AMBIENT AWARE / TALKTHRU



ON / OFF
x1



MULTI-POINT CONNECTION

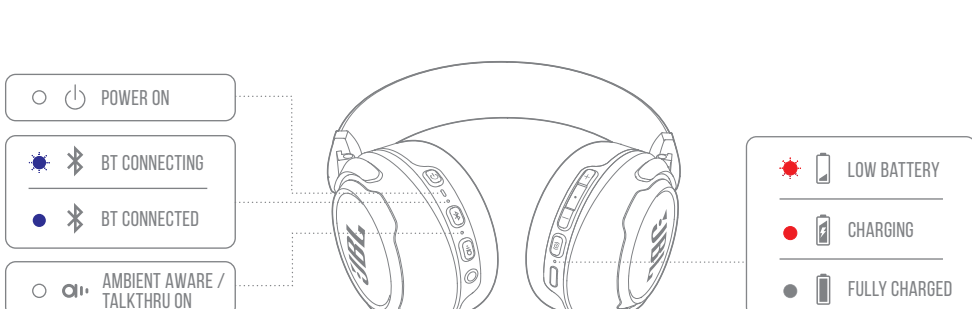


CHARGING



CHARGE 15MIN ⚡ = 2H 🎵

LED BEHAVIORS



TECH SPEC

DRIVER SIZE:	40 mm dynamic driver
FREQUENCY RESPONSE (PASSIVE):	16 Hz - 40 kHz
FREQUENCY RESPONSE (ACTIVE):	16 Hz - 22 kHz
SENSITIVITY:	100 dB SPL@1 kHz / 1 mW
MAXIMUM SPL:	93 dB
MAXIMUM INPUT POWER (PASSIVE):	1000 mW
MICROPHONE SENSITIVITY:	-24 dBV@1kHz/Pa
IMPEDANCE:	32 ohm
BLUETOOTH TRANSMITTED POWER:	<4 dbm
BLUETOOTH FREQUENCY MODULATION:	GFSK, π/4 DQPSK, 8DPSK
BLUETOOTH FREQUENCY:	2.402 GHz - 2.480 GHz
BLUETOOTH PROFILE VERSION:	A2DP 1.3, AVRCP 1.5, HFP 1.6
BLUETOOTH VERSION:	V5.0
BATTERY TYPE:	LITHIUM ION POLYMER BATTERY (3.7 V / 610 mAh)
POWER SUPPLY:	5V = 1 A
CHARGING TIME:	<2 hrs
MUSIC PLAY TIME WITH BT ON:	50 hrs
WEIGHT:	283 g

