

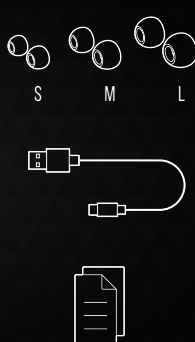
QUICK START GUIDE



TUNE175BT

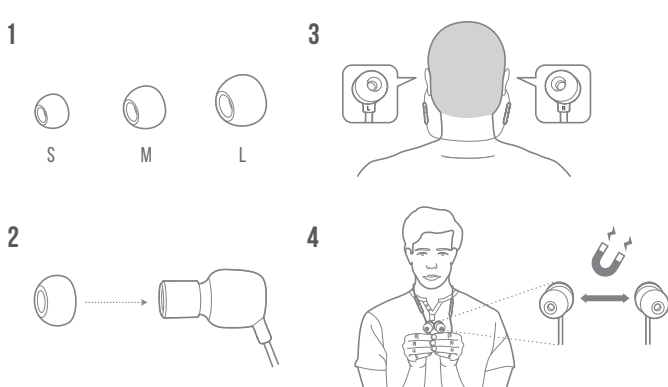


WHAT'S IN THE BOX

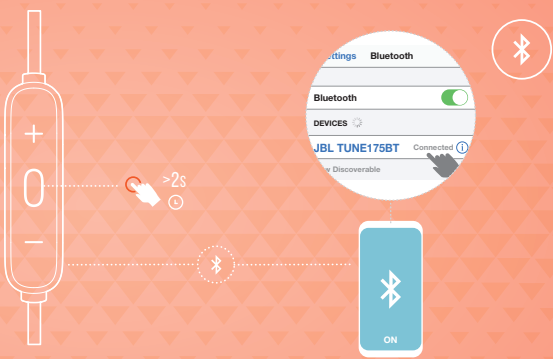


SCAN ME

HOW TO WEAR



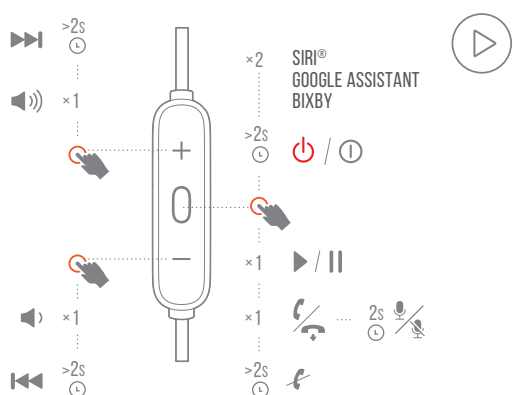
POWER ON & CONNECT



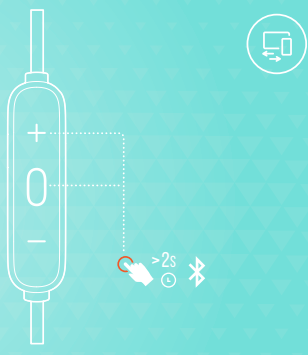
POWER ON AND AUTOMATICALLY ENTER PAIRING MODE

CHOOSE "JBL TUNE175BT" TO CONNECT

BUTTON COMMAND



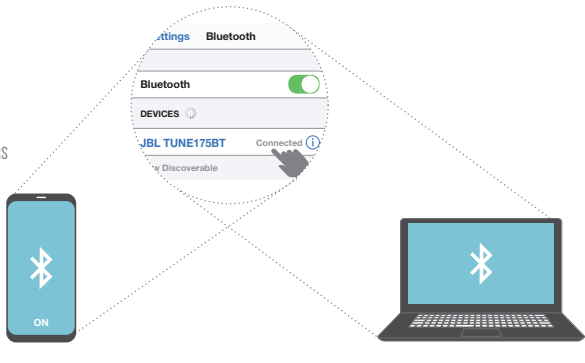
MULTI-POINT CONNECTION



* (MAXIMUM 2 DEVICES)

ENTER PAIRING MODE WITH THE 2ND DEVICE

- 1 TO SWITCH MUSIC SOURCE, PAUSE THE MUSIC ON THE CURRENT DEVICE AND SELECT PLAY ON THE 2ND DEVICE.
- 2 PHONE CALL WILL ALWAYS TAKE PRIORITY.
- 3 IF ONE DEVICE GOES OUT OF BLUETOOTH RANGE OR POWERS OFF, YOU MAY NEED TO MANUALLY RECONNECT THE REMAINING DEVICE.
- 4 SELECT "FORGET THIS DEVICE" ON YOUR BLUETOOTH DEVICES TO DISCONNECT MULTI-POINT.

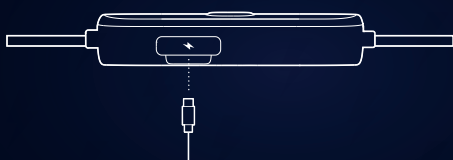


1ST BLUETOOTH DEVICE

CHOOSE "JBL TUNE175BT" TO CONNECT

2ND BLUETOOTH DEVICE

CHARGING



CHARGE 10MIN ⚡ = 1H 🎵

LED BEHAVIORS

★ ×2	🔌	POWER ON / OFF
●		NO DEVICE CONNECTED
★	📶	BT CONNECTING
●	📶	BT CONNECTED
★	🔋	LOW BATTERY
●	🔋	CHARGING
●	🔋	FULLY CHARGED



TECH SPEC

Model:	TUNE175BT
Driver Size:	8.6 mm / 0.34" Dynamic driver
Power supply:	5 V --- 1 A
Headset:	18.3 g / 0.04 lbs
Headset battery type:	Lithium-ion battery (3.7 V / 130 mAh)
Charging time:	< 2 hrs
Music playtime with BT on:	14 hrs
Frequency response:	20 Hz – 20 kHz
Impedance:	16 ohm
Sensitivity:	95 dB SPL @1kHz 1mw
Microphone sensitivity:	-29 dBV/Pa @1kHz
Bluetooth version:	5.0
Bluetooth profile version:	HFP 1.7, A2DP 1.3, AVRCP 1.6
Bluetooth transmitter frequency range:	2.4 GHz– 2.4835 GHz
Bluetooth transmitted power:	< 6 dBm
Bluetooth transmitted modulation:	GFSK, π/4 DQPSK, 8DPSK
Maximum operation temperature:	45 °C



