

Parts List

Stückliste

Description	Pos.	Part Nbr. Best.-Nr.	Quant. Stück	Bezeichnung
XLR – Connector, complete	1	2817Z0801	1	XLR – Stecker, komplett
Screw	2	0966D2500	2	Schraube
Battery cover	3	2817Z0401	1	Batteriedeckel
Sleeve	4	2817Z0201	1	Hülse
Battery holder	5	2817Z0301	1	Batteriehalter
Switch button	6	2817Z0501	1	Schalterknopf
Battery contact +	7	2817Z0701	1	Batteriekontakt +
Battery contact -	8	2817Z0601	1	Batteriekontakt -
Printed circuit board, complete	9	2817M0101	1	Print komplett
Switch	9.1	0040E0169	1	Schalter
XLR – Pin assembly	9.2	0016E0346	1	XLR – Steckereinsatz

Technical Specs

Technische Daten

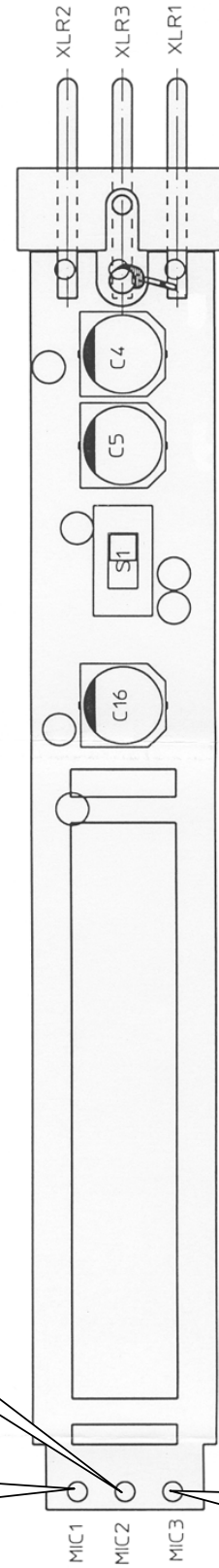
Current drain	25 mA +/- 2 mA @ 1,5V / R _L = 5k6	Stromaufnahme
Output voltage	12V +/- 0,3 V @ pin1/2 ; pin1/3	Ausgangsspannung

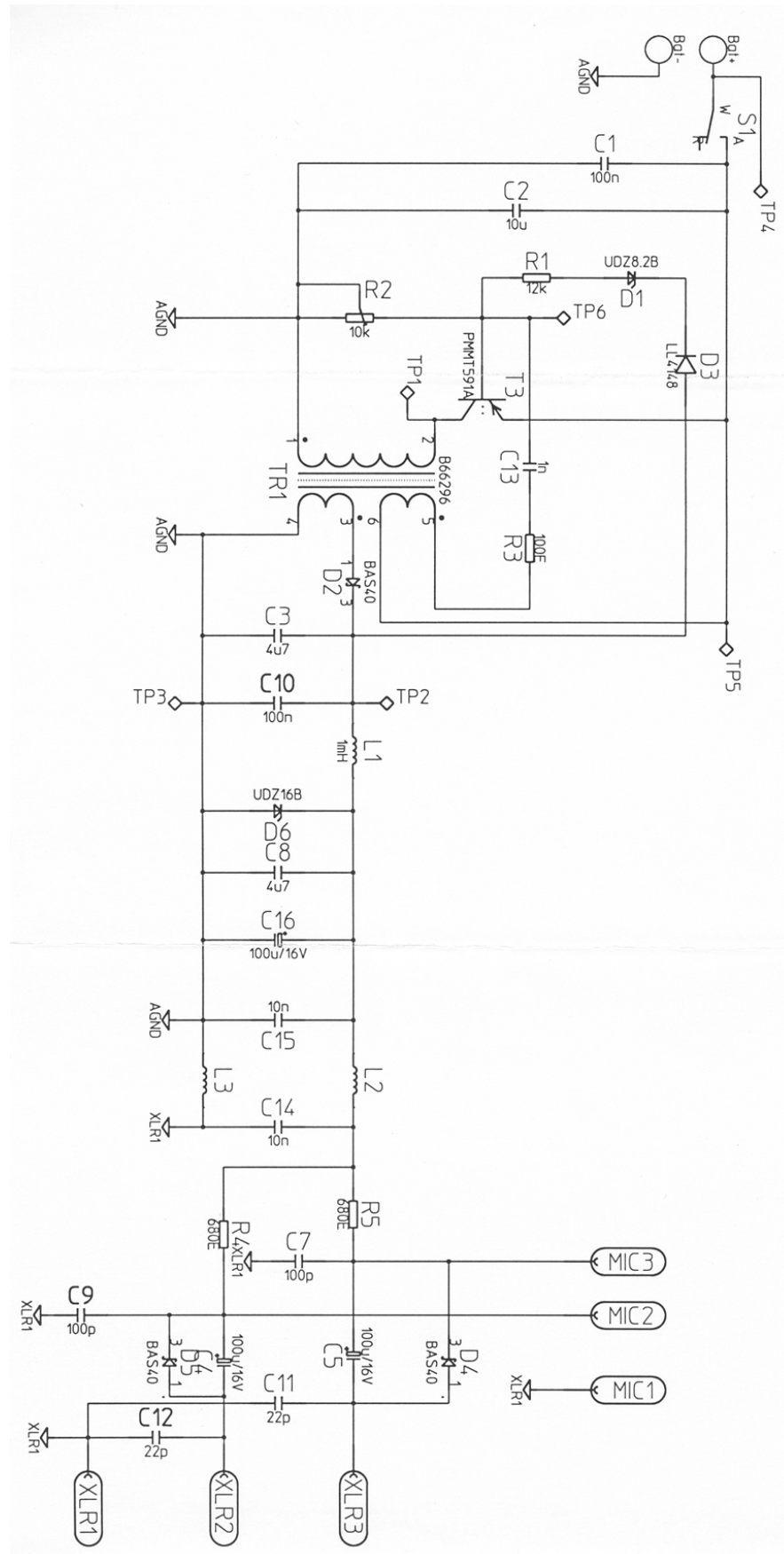
Remark:

Hinweis:

Although the next pages contain component layout, schematics and a list of all electronic components, we only deliver those parts mentioned in the main parts list shown above.

Obwohl die nächsten Seiten Printlayout, Schaltung und eine Stückliste der elektronischen Bauteile enthalten, liefern wir nur die in der obigen Hauptstückliste genannten Teile.





List of electronic components

<i>Ecode</i>	<i>Compname</i>	<i>Reference</i>	<i>pcs/ unit</i>	<i>Description</i>
9010E0029	bc850b	T1	1	NPN-transistor: BC850B (low noise); case SOT23
9014E0022	114001	D1	1	chip-diode: silicon: 1N4001; case 0207 (MELF)
9031E2200	caps	C10 C11 C12	3	chip-cap: case 0603: COG: 22 pF; +-5%; 63V;
xxxxExxxx	caps	C9	1	chip-cap: case 0603: COG: 100 pF; +-5%; 63V
9034E1023	caps	C2	1	chip-cap: case 0603: X7R: 10 nF; +-10%; 50V;
9036E1003	caps	C1	1	chip-cap: case 0603: X7R: 1 uF; +-10%; 10V
9036E4703	caps	C3 C8	2	chip-cap: case 1206: Y5V: 4,7 uF; +80%/-20%; 16V
9037E3301	pcaps	C4 C5 C6 C7	4	chip-alu-cap: 33u 50V +-20%; d=8.0 h=6.5mm; Panasonic: ECEV1HA330UP; NCC: MV; Nichicon: UR; Elna: RV
xxxxExxxx	inds	L1	1	Coil case 0805 (will be defined later...)
xxxxExxxx	ress	R4 R5 R8 R9	4	chip-resistor: case 0603: 680 Ohm; 1%
9006E1016	ress	R1 R10 R6 R7	4	chip-resistor: case 0603: 100 kOhm; 5%
9006E1200	ress	R2	1	chip-resistor: case 0603: 120 kOhm; 5%
9007E1012	ress	R11	1	chip-resistor: case 0603: 1 MOhm; 5%
9007E1500	ress	R3	1	chip-resistor: case 0603: 1.5 MOhm; 5%
xxxxExxxx	lt1307	U1	1	Linear Technology LT1307
xxxxExxxx	sw2smd	S1	1	SSSS8-22-B-3;SMD-Switch; Alps