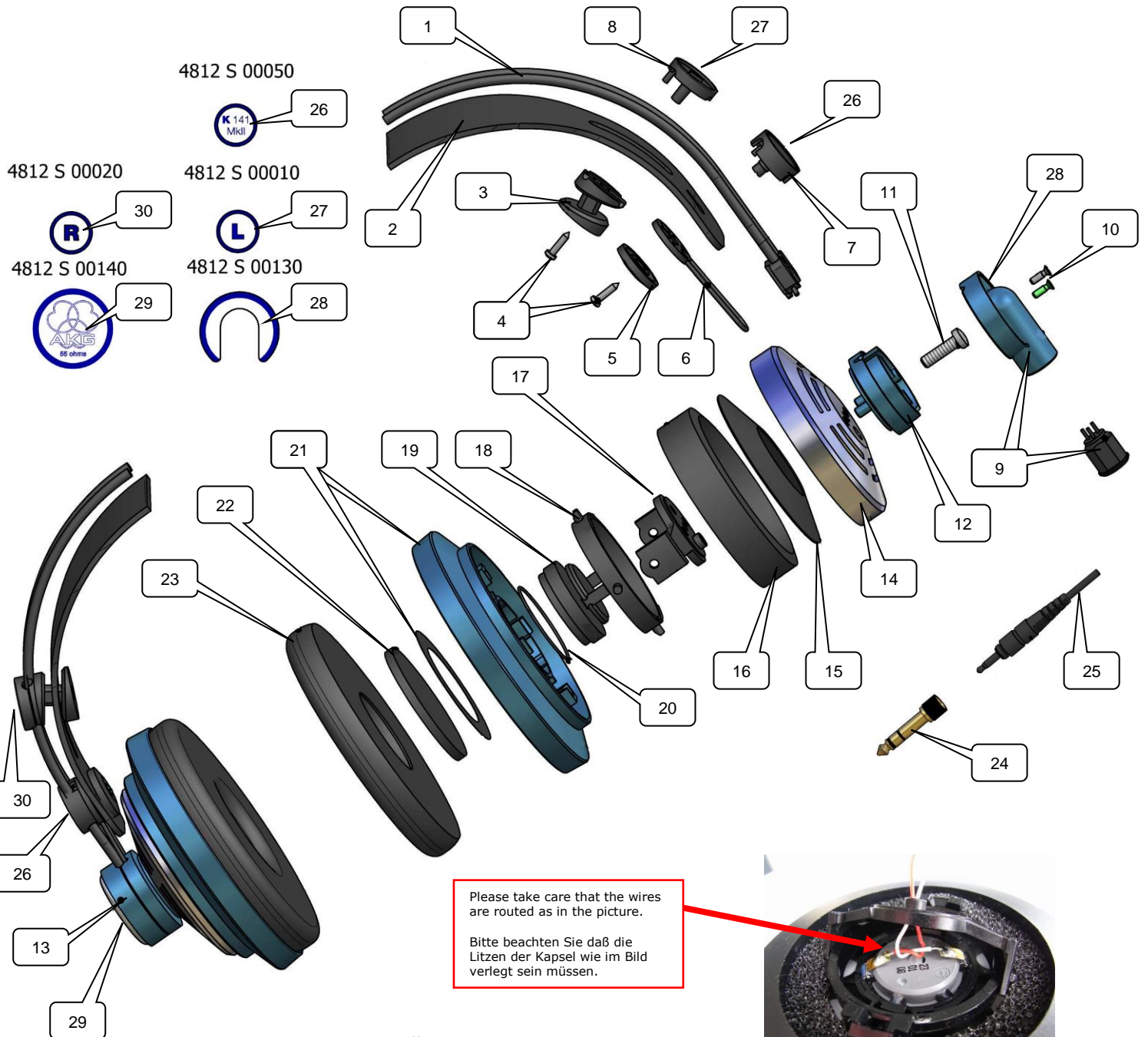
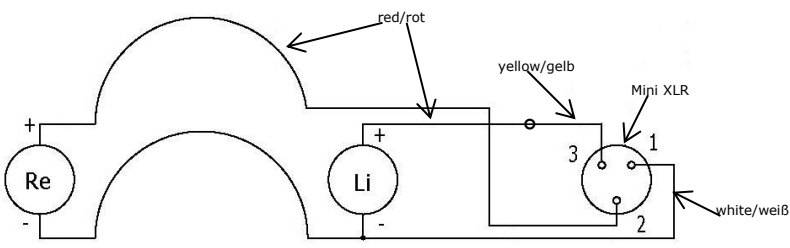
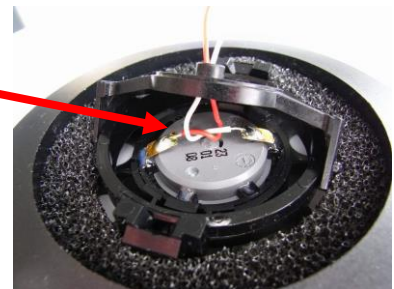


# K141 MKII

SERVICE MANUAL / # 2144(Z)X00190 / 06/17



Please take care that the wires are routed as in the picture.  
Bitte beachten Sie daß die Litzen der Kapsel wie im Bild verlegt sein müssen.



## Parts list / Stückliste

<i>Description</i>	<i>Pos.</i>	<i>Part number Bestellnummer</i>	<i>Quant. Stück</i>	<i>Bezeichnung</i>
Outer headband	1	2040M02110	1	Bügel
Headband	2	2908Z35010	1	Bügelband
Wedge	3	2040Z36020	2	Führungskeil
Screw Ejoyt 22x8	4	0099N22040	4	Schraube Ejoyt 22x8
Cover	5	2040Z18020	2	Deckel
Rubber loop	6	2040M03030	2	Gummischlaufe
Slider	7	2040Z17260	2	Führung
Cover	8	2040Z52010	2	Abschlussdeckel
Cover left +MiniXLR	9	2058M98010	1	Deckel links + MiniXLR
Screw Ejoyt 22x8	10	0099N22130	3	Schraube Ejoyt 22x8
Screw Ejoyt 40x10	11	0099N40030	2	Schraube Ejoyt 40x10
Shell	12	2040Z08050	2	Topf
Cover right	13	2040Z09170	1	Deckel rechts
Housing	14	2040Z33030	2	Haube
Ring	15	2144Z10010	2	Ring
Foam strip	16	2144Z12010	2	Streifen
Swivel joint	17	2040Z05020	2	Gelenkstück
Cardan clamp	18	2040Z04010	2	Kardan Mittelstück
Capsule XXL	19	2606B00050	2	Kapsel XXL
Rubber ring	20	6000N00230	2	O-Ring 20x1
Capsule housing	21	2144M99020	2	Kapselgehäuse
Disk	22	2144Z08010	2	Scheibe
Cushion	23	2144Z16010	2	Ohrpolster
Cushion, velours	23	2144Z16020	(2)	Ohrpolster, Velour
Adapter	24	0018E03350	1	Adapter
Cable	25	0110E02440	1	Kabel
Helix cable	25	0110E03150	(1)	Spiralkabel
Plate "K141MkII"	26	4812S00050	2	Schild "K141MkII"
Plate "L"	27	4812S00010	1	Schild "L"
Plate "Made in ...."	28	4812S00130	1	Schild "Made in ...."
Plate "AKG"	29	4812S00140	1	Schild "AKG"
Plate "R"	30	4812S00020	1	Schild "R"