



ULTIMA2 LOUDSPEAKER SERIES

ULTIMA2

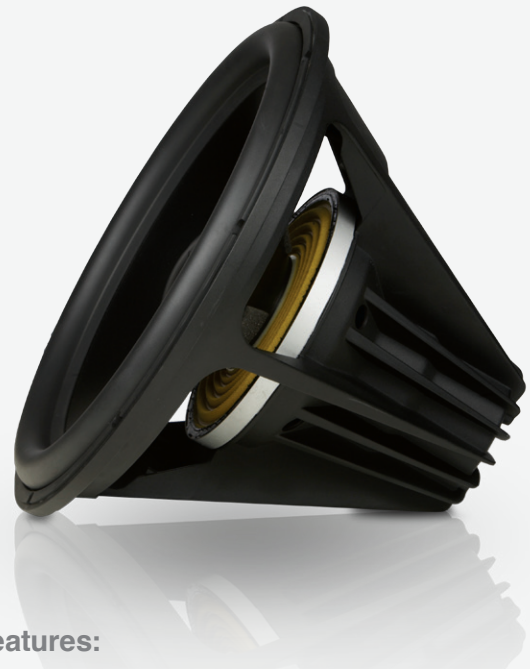
 **REVEL**[®]
by HARMAN
The World's Finest Loudspeakers

ULTIMA RHYTHM2

The most celebrated series of Revel loudspeakers adds a subwoofer.

The Revel Ultima Rhythm2 sets a new standard for powered subwoofers at any price. With its dual voice coil, 18-inch (460-millimeter) woofer and dual ultrahigh-power amplifiers, the Rhythm2 subwoofer can play real-world program material at astonishingly high levels with very low distortion – all without the use of servo feedback. At the same time, its extraordinarily low distortion and freedom from dynamic compression make it the perfect complement to the world's finest main loudspeakers – blending easily while reproducing low frequencies with both authority and nuance.

The Ultima Rhythm2's DSP parametric equalization takes sonic accuracy to a level not possible with conventional subwoofers. It compensates for room-related irregularities by applying a corresponding correction curve to achieve ideal in-room low-frequency response. The result is greatly improved realism for music and movie soundtracks with cleaner, more articulate bass.



Features:

- » **Standard-setting output capability and low distortion**
- » **Massive 18-inch woofer with dual 4-inch x 1.75-inch voice coils and neodymium motor structures**
- » **Ultralow-distortion motor system with symmetrical magnetic fields and mirror-image spider design to cancel distortion; no servo feedback system required**
- » **Two ultrahigh-power amplifiers with a total of 2,000W RMS and 4,000W peak output for low dynamic compression at very high output levels**
- » **Sophisticated self-protection circuitry allows unprecedented dynamics for extraordinarily lifelike bass**

REVEL ULTIMA2: BUILDING ON EXCELLENCE

The Revel® Ultima2 Series, like the Ultima Series before it, changed the loudspeaker landscape. Now, the line that incorporates one innovation after another welcomes a subwoofer to the family.

LOW-DIFFRACTION BAFFLES AND ENCLOSURES

Ultima2 Series loudspeakers feature rounded baffles and enclosures that virtually eliminate diffraction. These optimized baffles and enclosures help Ultima2 loudspeakers deliver superior on-axis response and extraordinarily smooth off-axis response.

PROPRIETARY TRANSDUCER DESIGN

Ultima2 woofer and midrange transducers feature inverted-dome designs that deliver superb pistonlike behavior even at maximum sound levels. Aluminum flux-stabilization rings minimize second- and third-order harmonic distortion, while copper caps reduce inductance modulation. The result is dramatically reduced distortion and unmatched sonic purity even at high listening levels.



TWEETER WAVEGUIDES

Ultima2 tweeters incorporate acoustically optimized waveguides that provide inaudible transitions between the tweeter and midrange. This seamless transition enhances realism and produces a smooth, uncolored response over a wide listening area.

BERYLLIUM-DOME TWEETERS

The pure-beryllium-dome tweeters used in every Ultima2 loudspeaker exhibit an optimal balance of high-power handling, low distortion and low compression. Ultima2 tweeters offer advantages that extend beyond what is measurable – specifically an unmatched transparency and sense of absolutely grainfree reproduction of fine recordings.

CROSSOVER NETWORKS

Each Ultima2 loudspeaker employs separate filter boards for each frequency range. Ultima2 fourth-order crossovers provide greater power handling and less distortion than simpler networks and achieve superb integration, transparency and musicality.

CURVILINEAR CABINETS

Salon2 and Studio2 loudspeakers feature an innovative cabinet construction that is exceptionally inert and free of audible colorations. Nine layers of laminated MDF (medium-density fiberboard) are formed into a curvilinear, single-piece enclosure that is inherently antiresonant.

TUNED TO PERFECTION

Revel technicians use an exclusive tuning process to performance-match each and every Ultima2 Series loudspeaker within a fraction of a decibel to the original engineering standard. So owners can be confident that their Revel Ultima2 loudspeakers sound as great as the lab reference.

RIGOROUSLY TESTED

Revel engineers believe that better testing produces better speakers. So every loudspeaker they make is subjected to a battery of tests to determine musically relevant measurements. This proprietary HARMAN analysis yields data that correlates closely to what people actually hear. Ultima2 speakers are compared to other speakers in the world's only position-independent, double-blind listening facility. Before a Revel loudspeaker ever satisfies a discriminating reviewer or audiophile, it has to satisfy the toughest audience of all: trained Revel listeners.



ULTIMA RHYTHM2 | SPECIFICATIONS

- » 18-inch cast-frame woofer
- » 4-inch-diameter voice coil
- » 1.7-inch X_{max}
- » 2,000WRMS / 4,000W peak power
- » Over 115dB acoustic output
- » High-resolution DSP room EQ
- » Fully configurable electronic crossover
- » High-pass room EQ
- » PC setup via USB
- » Dimensions (H x W x D): 24.6" x 27.9" x 28.1" (625mm x 709mm x 714mm)
- » Product weight: 177 lbs (80kg)

ULTIMA2 | SPECIFICATIONS

PRODUCT	SENSITIVITY	IMPEDANCE	FILTER NETWORK	FREQUENCY RANGE	LOW-FREQUENCY EXTENSION	DIMENSIONS (H X W X D)	WEIGHT
Voice2	89dB SPL with 2.83V @ 1m (4pi anechoic)	6 ohms (nominal) 3.6 ohms (minimum @ 90Hz)	3-way, high-order acoustic response @ 235Hz and 2kHz	-3dB from 60Hz to 45kHz	-10dB at 36Hz -6dB at 49Hz -3dB at 60Hz	On cradle: 14.2" x 25.5" x 15.6" (361mm x 647mm x 396mm) On stand: 24.2" x 28.0" x 16.8" (614mm x 711mm x 427mm)	74.5 lbs (33.8kg)
Gem2	86.5dB SPL with 2.83V @ 1m (4pi anechoic)	6 ohms (nominal) 3.6 ohms (minimum @ 90Hz)	3-way, high-order acoustic response @ 400Hz and 2.3kHz	-3dB from 70Hz to 45kHz	-10dB at 48Hz -6dB at 60Hz -3dB at 70Hz	24.2" x 12" x 6.1" (615mm x 305mm x 155mm) Height on bookshelf stand: 28.87" (657.1mm) Height on floor stand: 46" (117cm)	38 lbs (17.2kg)
Salon2	86dB SPL with 2.83V @ 1m (2pi anechoic)	6 ohms (nominal) 3.7 ohms (minimum @ 90Hz)	4-way, high-order acoustic response @ 150Hz, 575Hz and 2.3kHz	-3dB from 23Hz to 45kHz	-10dB at 17Hz -6dB at 20Hz -3dB at 23Hz	54.5" x 11" x 19.8" (138.4cm x 279mm x 504mm)	178 lbs (80.7kg)
Studio2	87dB SPL with 2.83V @ 1m (2pi anechoic)	6 ohms (nominal) 3.7 ohms (minimum @ 90Hz)	3-way, high-order acoustic response @ 230Hz and 2kHz	-3dB from 32Hz to 45kHz	-10dB at 21Hz -6dB at 25Hz -3dB at 32Hz	47.5" x 10.8" x 17.7" (120.7cm x 273mm x 451mm)	140 lbs (63.5kg)