

Technical Manual

CONTROL 1X

JBL

ACOUSTIC & ELECTRICAL SPECIFICATIONS:

- Nominal Impedance: 8Ω
- Max Amp Power 80 watts*
- Frequency Response 80 Hz - 20kHz
- Sensitivity: 89dB @2.83 volts/1 meter
- Crossover Frequency: 4,000Hz

SYSTEM COMPONENTS:

- Cabinet CONTROL 1X (Not for Sale)
- Grille C1004X
- High-Frequency Transducer: 1/2" (12.7mm) Titanium-Laminate, Shielded (C1002X)
- DC Resistance 3.3 ohms \pm 10%
- Low-Frequency Transducer 4" (101.6mm) Shielded (C1003X)
- DC Resistance 2.4 ohms \pm 10%
- Crossover Network C1006X

AURAL SWEEP TEST SPECIFICATIONS:

- System Aural Sweep Test 6.0V Input 80 Hz to 20 kHz
- L.F. Aural Sweep Test 5.0V Input 80 Hz to 5 kHz
- H.F. Aural Sweep Test 2.83V Input 3 kHz to 20 kHz

PHYSICAL SPECIFICATIONS:

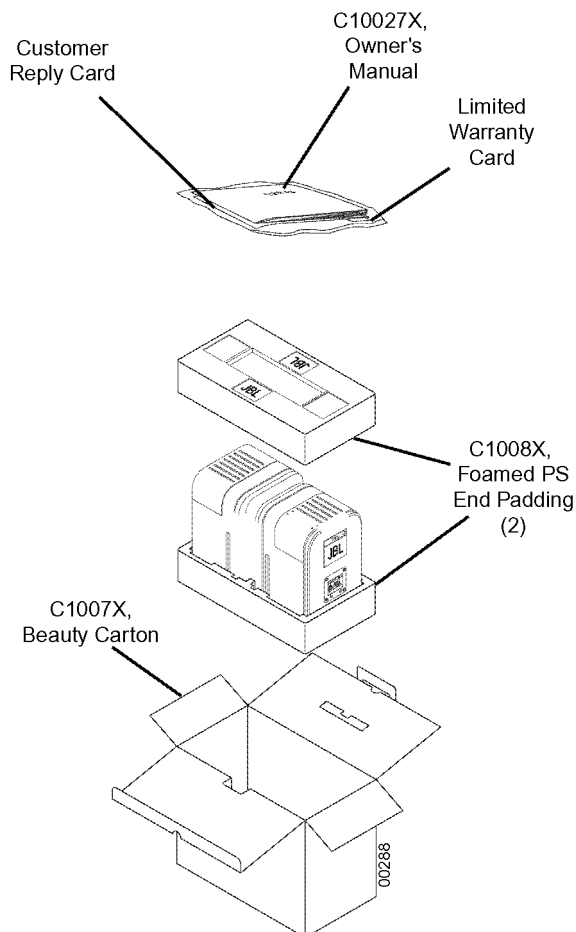
- Enclosure dimensions: 9" x 6-1/16" x 5-7/16"
(228mm x 155mm x 139mm)
- Weight 10.4 lbs (4.7 kg) Sold in Pairs

WARRANTY:

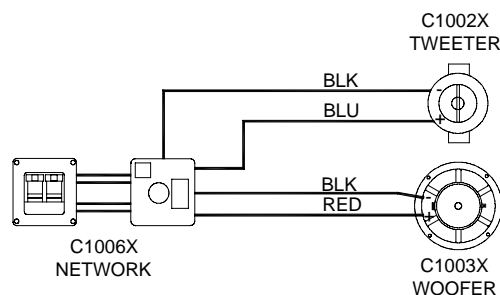
- Refer to Warranty Statement packed with each product.

* The maximum recommended amplifier power rating will ensure proper system headroom to allow for occasional peaks. We do not recommend sustained operation at these maximum power levels.

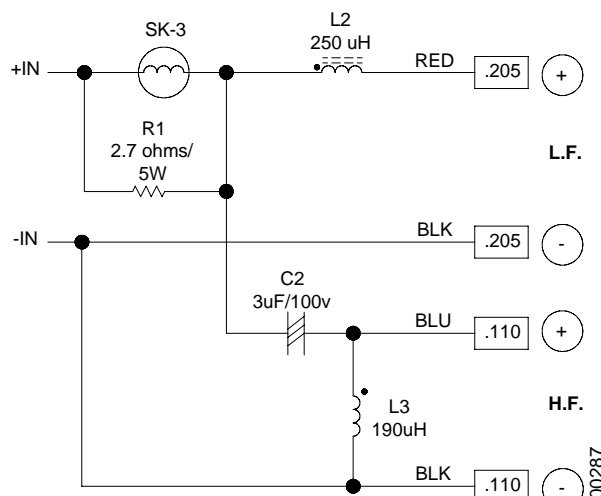
PACKING



WIRING DIAGRAM

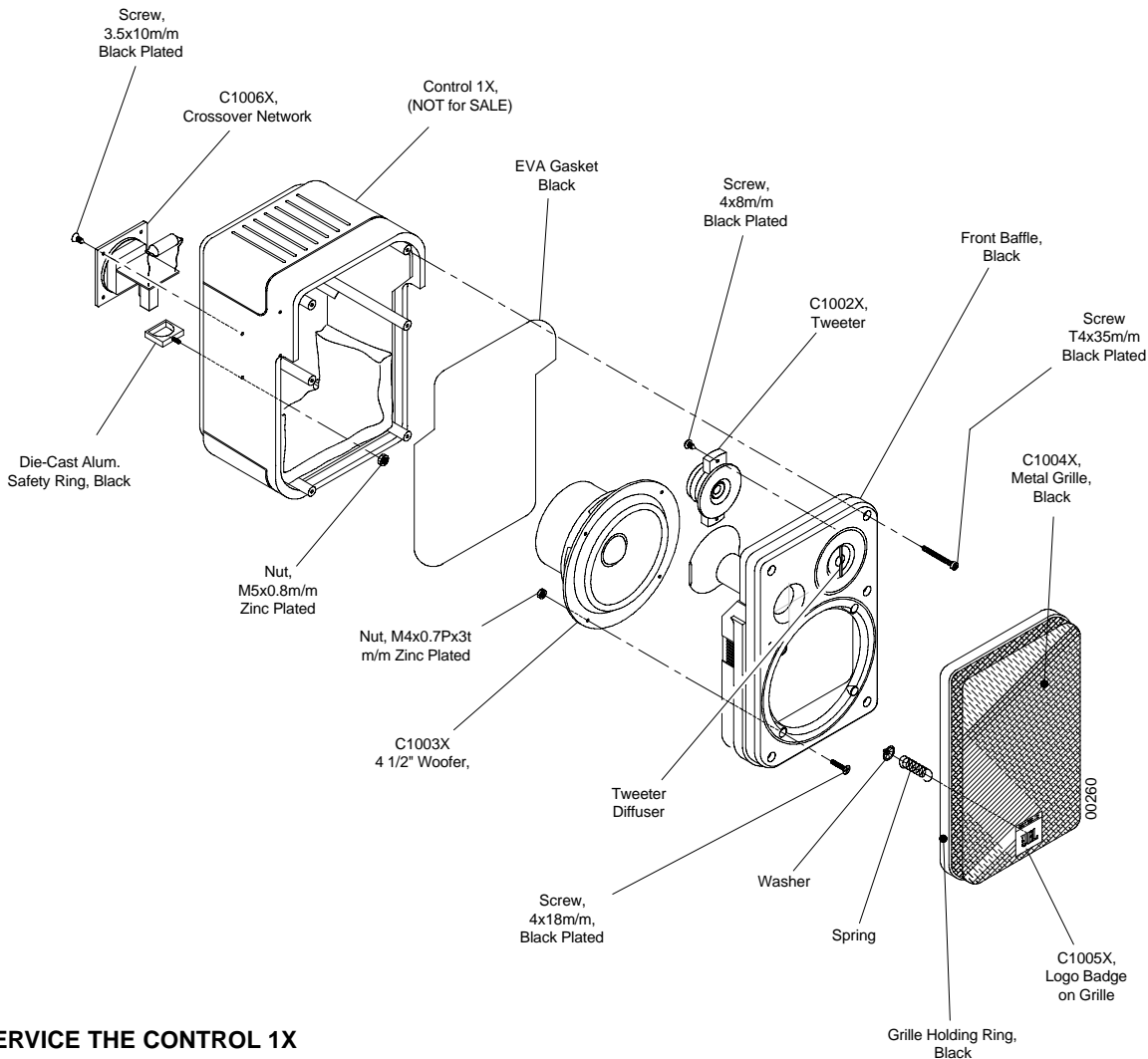


CONTROL 1X SCHEMATIC



CONTROL 1X

EXPLODED VIEW



TO SERVICE THE CONTROL 1X

1. Remove the grille.
2. Remove all (6) 1 3/8" Allen Head screws holding the front baffle to the enclosure.
3. Separate the front baffle w/ drivers from the enclosure.

DRIVER REMOVAL - both woofer and tweeter are bonded to the front baffle with adhesive.

Unclip faston connectors from both woofer and tweeter.

a) Woofer removal

Remove all (4) machine screws; rear nut can be held by long-nosed pliers while screws are turned.

Apply heat gun (750°) to area around woofer basket until adhesive softens enough to extract the woofer.

b) Tweeter removal

Remove both (2) Philips screws.

Apply heat gun (750°) to area around inside of cavity until adhesive softens enough to extract the tweeter.

After removal, take care not to lose or misplace the small clear plastic diffuser should it become dislodged.

CAUTION: Too much heat applied in one area too long could warp the front baffle.

DRIVER REPLACEMENT

Both woofer and tweeter must have a bead of adhesive applied to the outer rim only upon re-assembly.

Silicon Sealer or Rubber-to-metal cement is recommended.